

THE DIRECT REPORT

January 2023



The staff at [Direct Steel and Construction](#) is eager to provide value engineering recommendations and our vast experience to each of your projects as a Construction Solutions Provider.



PREPARE SITE FOR WINTER



Contact the Experienced, Professional Staff at [Direct Steel and Construction](#)

Solutions@DirectSteelLLC.com



The winter months can create problems that only occur this time of year, so it is important to think ahead and be ready for them.

Exactly what actions need to be taken will depend on the specific workplace in question, but there are some general things to consider that are applicable across most sites.

Sit down and create a plan, considering key areas such as:

- Clearing roads, walkways & workspaces
- Storing materials and equipment
- Protecting workers from the elements
- Ensuring workers are trained for winter

Direct Steel and Construction is always committed to safety on all projects. Visit the [Project Portfolio](#) page

[LEED Credentials](#)

[WBE / WOSB Certified](#)

[Authorized VP Builder](#)

[Optima Certified](#)

Direct Steel and Construction is a Construction Solutions Provider and has delivered great experiences for industrial, commercial, and government clients.

Our team provides services which facilitate optimal end results including Strategic Facility Planning, Facility Assessment, Budgeting, Estimating, and Project Management throughout construction.

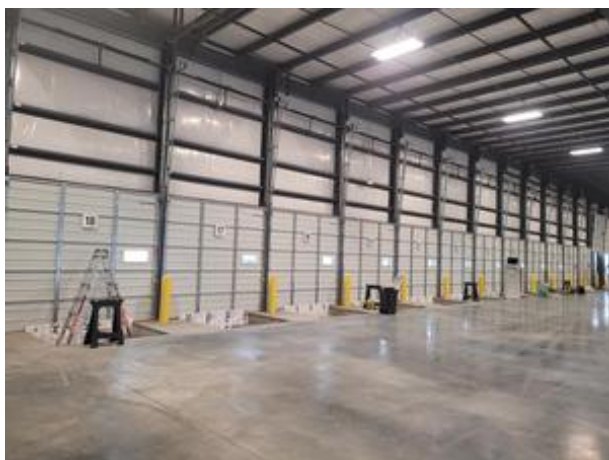
Clients benefit from cost effective, aesthetically pleasing, energy efficient and environmentally sound buildings that facilitate a relationship among people, technology and space.

of our website. Creating a building that meets all your needs is the goal of Direct Steel and Construction.

Sources: (1) Building Talk, "Five ways to prepare your construction site for winter" (November 16, 2018)

Company News

Direct Steel is proud to have been a part of the "6800 River Road" project. Congratulations to all the team members, trade partners, and owners who contributed to the successful completion of this project!



DirectSteelLLC.com



**3321 State Route 31
Crystal Lake, IL 60012
(815) 444-8844**

Copyright © 2023 Direct Steel® and Construction

Services and Solutions Offered

Engaged at the earliest stages of a project, Direct's services facilitate the alignment of scope, budget, schedule, quality, and safety.

General Contractor

As a General Contractor, we work in cooperation with architects, designers, and end users in order to integrate the optimal technology into well-designed new buildings, additions, repairs, and remodeling.

Construction Management

As Construction Managers we provide budget analysis, facilitation of permit applications, preliminary scheduling, securing competitive trade contractor bids, clarification of scope, and we maintain and monitor oversight through final construction.

Owner's Representative

We proudly represent businesses as they seek to build or expand. We look at the customer's design idea and align with constructability and budget in addition to other considerations (ie, entitlement, incentives, etc.).

[Click to view this email in a browser](#)

If you no longer wish to receive these emails, please reply to this message with "Unsubscribe" in the subject line or simply click on the following link: [Unsubscribe](#)

Direct Steel and Construction
3321 State Route 31
Crystal Lake, Illinois 60012

US

[Read](#) the VerticalResponse marketing policy.

